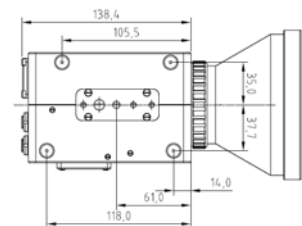
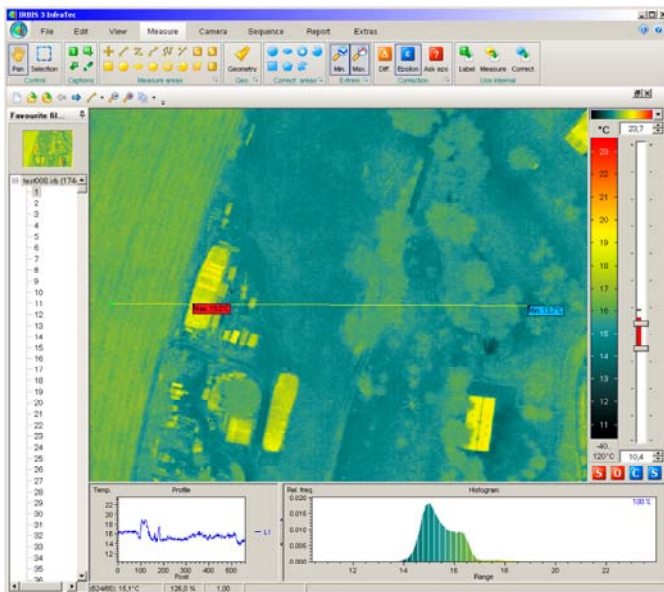


VarioCAM[®] hr head Gimbal System for Helicopter Mount



Technical specifications

Thermographic Camera	VarioCAM[®] hr head
Spectral range	(7.5 ... 14) μm
Detector	Uncooled Microbolometer Focal Plane Array
Detector format (IR pixels)	(640 x 480)
Measurement accuracy	$\pm 1.5 \text{ K}$ (0 ... 100) $^{\circ}\text{C}$; $\pm 2 \text{ K}$ (< 0 and > 100) $^{\circ}\text{C}$
Temperature resolution @ 30 $^{\circ}\text{C}$	Better than 0.03 K at F/1.0
Frame rate	50/60 Hz
Dynamic range	16 Bit
Lens (field of view)	1.0/30mm (30 x 23) $^{\circ}$ standard lens; 0.83 mrad 1.0/75mm (12 x 9) $^{\circ}$ tele lens; 0.33 mrad 1.3/130mm (7 x 5.3) $^{\circ}$ tele lens; 0.19 mrad
Temperature measuring range	(- 40 ... 1,200) $^{\circ}\text{C}$
TV Color Camera	SONY High Definition Color Block Camera
Image sensor	1/3" wide dynamic HD CMOS sensor
Effective pixels	Approx. 2 Megapixels
Lens	20x optical zoom; HFOV: (55 ... 2.9) $^{\circ}$ at 1080p/30
Digital zoom	12x
Gimbal System	SWE 400 Triple
Dimensions	400 mm diameter
Gimbal stabilisation	Better than 25 μrad
Flight standard	RTCA 160D
Gimbal mount	Tyler nose mount